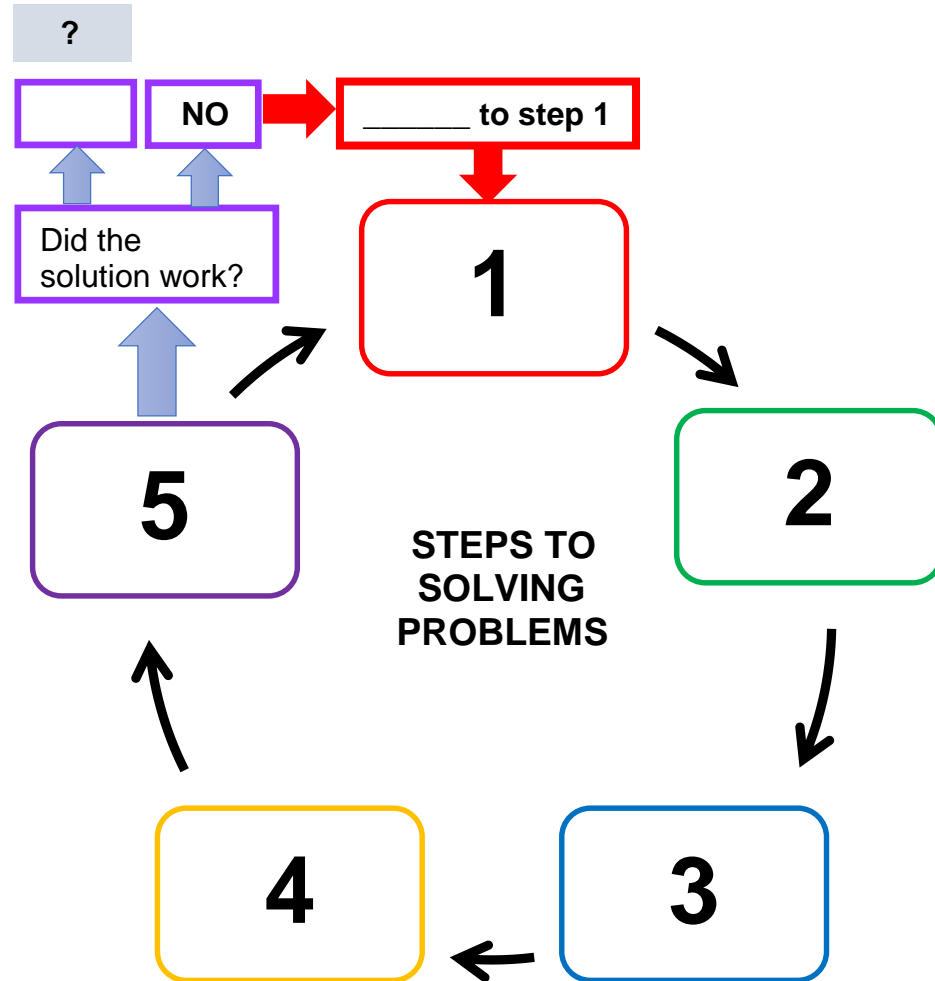


ACTIVITY 1

FOLLOW THE STEPS

Fill in the missing information in the steps below.



ACTIVITY 2

CREATIVE V CRITICAL

Place each word from the pairs in the list below into the correct column. Each word is associated with either critical or creative thinking. If you don't understand the meaning of the word find it's meaning to help you decide which column it belongs to.

Critical thinking	Creative thinking

analytic / generative
vertical / lateral
judgement / presumption
forming / testing
closed / open-ended
reasoning / speculating
yes and / yes but
emotional / rational



convergent / divergent
possibility / probability
diffused / focussed
objective / subjective
associative / linear
intuition / logic
imagination / sequence
inward / outward